

Knothole News

GREEN COUNTRY WOODWORKERS

TULSA, OKLAHOMA

October 2018 NO. 318

Officers

President
Michael Mitchell 918-284-8085 C

Vice-President
Gregg Zumwalt 918-288-6537 C
918-605-2761

Secretary
Bill Morgan 918-369-6435

Treasurer
Ray Huck 918-618-2980

Club Committees

Continuing Board Member

Vacant

Luncheon
Bill Morgan 918-369-6435

Name Tags

Newsletter
Earle Smith 918-286-7343
918-404-6442

Programs

Vacant

Toys / Show & Tell

Betty Zumwalt 918-249-4663

Toy Wheels & Axles

Jim Rouse 918-636-9286

UPCOMING EVENTS

Kerf Marker

How to use it and Make it

Thursday October 11, 2018 6:30 PM

Robert Rothenbucher Shop

10509 S. Joplin Ave.

Tulsa, Ok 74137

President's Message



Greeting Everyone,

The October meeting is not far off, lets talk about meeting location, have some ideas. The web site will be up and running in a short time, we need ideas of what everyone wants to have displayed on the site. If you have finished toys bring a list/count to the meeting. If you need wheels, call Jim Rouse at 918-636-9286. Play nice and we will see everyone at the meeting.

Mike Michael, President



For information: email

www.mitch1946@hotmail.com

GCWW Meeting Minutes

September 2018



The GCWW club met on 9/13/18 at Jim Rouse's shop. In attendance were Mike Mitchell, Gregg Zumwalt, Earle Smith, Ray Hucek, Bill Nay, Robert Rothenbucher, Vinton Knarr, Victor Nichols, Mike Ruttgen, Arthur Barber, Jim Rouse and Bill Morgan. Mike Mitchell called the meeting to order, introduced the visitors to the group, and led a discussion of a few items of club business.

Earle Smith and Harold Blalock have been working on setting up a new website for the club, but haven't accomplished it yet. Arthur Barbour has some experience setting up websites and offered his assistance. While we don't have a final estimate of all the costs involved, a motion was made and approved to set aside \$250 of the club's funds to cover any related costs.

Mike, Earle and Gregg reviewed the club's "Christmas Toy Build" and "Beads of Courage Box" efforts for the benefit of the newcomers. Several members brought in samples of toys they're building for this year's Christmas. Modifications to the original plans and improvements to the assembly process were shared with the group. Finished toys can be brought to the next couple of meetings and Earle will take care of boxing them up for presentation to "Toys for Tots" at our dinner meeting in December. Individuals can also simply box up their toys and bring them to the December dinner.

It was agreed that this month's 4th Thursday dinner will be at Siegi's Sausage Factory near 81st and Sheridan.

Show and Tell:

Jim Rouse showed one of 14 cutting boards he's built using the techniques demonstrated by Ray Hucek at one of last year's club meetings. Jim has given the boards to family and friends and also donated some to fund raisers. The board he showed was made from maple and purple heart.

Jim has built a number of elaborate wood projects for his children and grandchildren. His current project is a semi-truck and trailer for his grandson Hudson. Jim was inspired by some of Bud Garbee's work and the pattern is from "Toys and Joys". Jim has a friend with an N/C machine that uses a laser to transfer patterns to wood. The sides of the trailer have a "Hudson Trucking" logo incorporating a picture of Hudson. Woodcraft sells a machine that will do this for around \$7000 and the downtown public library has similar equipment available for use. The library has information on how to get the training necessary to use the equipment and it can be reserved by anyone qualified for its use.

Jim has become somewhat of a collector of hand planes. He reviewed how he got started with planes and showed some of the various types and sizes he uses. He had a glued up panel of 2" pine and demonstrated the use the planes to flatten the surface. Several people brought in their own planes and everyone had a chance to experience this traditional woodworking technique. Planes are readily available at estate sales, garage sales and flea markets and many older planes can be refurbished for substantially less cost than purchasing a new plane of comparable quality. Jim reviewed how he goes about refurbishing a plane and how he sharpens the blades. Several other people joined in an informative discussion of different plane designs as well as how they're used and maintained.

Jim's comfortable covered patio and his wife's delicious homemade pies (along with coffee and water) provided a great setting for what turned out to be a very information meeting.

Submitted by Bill Morgan

Presentation for October

Kerf Marker

by Robert Karl Rothenbucher

One of Roberts's favorite jigs is the Kerf Marker. It's a simple device that that enables the user to determine the precise width of a dado or groove to assure a snug fit. He will demonstrate how to use it and even how to make one for yourself.

This is the first club meeting Robert has hosted. So, before the presentation, he's so kind as to give us a brief shop tour. Like any dedicated craftsman, his tools are dear to him and as a retired mechanical engineer, every tool operates near precision tolerance.

Robert has only a few chairs. Secure your seat by bring your own.

This meeting promises to be very good one, so see you there.

Last Months Meeting

Pictured below is the business portion of our meeting. One of the important topics was the agreement to allot \$250 towards creating a Club website and Arthur Barber accepting the task of webmaster. After Arthur presented the alternatives of costs and capabilities of 3 host website companies, one was selected and the web address purchased.

Three first time attendees came to the meeting; Victor Nichols, Mike Ruttgen and Arthur Barber. A welcome to the Club was extended.



Jim demonstrated the use of a couple of his favored planes to flatten a 2 inch pine panel. He emphasized need to keep the blade sharp as it helps to prevent hand and arm fatigue while planing. He started by using a scrub plane over the high spots and finished using a smoothing plane. Several other people who brought planes showed their specialized use such as making a rabbit, groove or smoothing a surface.



Show and Tell at the September Meeting



Jim Rouse purchased the plan from *Toys and Joy* & built the 18 Wheeler for one of his Grandsons.



Mike Mitchell cut strips from red oak to weave the four panels of the basket.



Vinton Knarr's Batmobile made for Toys for Tots Christmas donation.



Karl Rothenbucher designed this toy to be simple to build & fun for kids.



Vinton Knarr found this design for a Indy Racer and made several. The driver's head was shaped on a wood lathe and then hand painted the face features with craft acrylic paint.



Gregg Zumwalt built a heavy duty Batmobile that rolls fast and will take the punishment of play.

Preventing Snipe when Planning

Excerpt from The Wood Whisperer. Thanks to Marc Spagnuolo! www.thewoodwhisperer.com



Some planers (sometimes jointers and drum sanders too) have a really annoying habit of digging in deeper at the beginning and/or ends of boards. This phenomenon is called snipe. It can be a very minor dip that only becomes visible when applying finish, or it can be severe as in the photo to the left.



Planers and drum sanders have two pressure rollers, on either side of the cutter/drum head. The rollers hold the board down so that it registers consistently as it passes through the machine. But at the beginning and also at the very end of the pass, the board is only being held down by one roller. Snipe occurs when the board lifts slightly, due to the fact that it is only being held down by this single roller. The end result is a board that is just a hair thinner at the leading and trailing 3-4 inches.

Dealing With Snipe

Since snipe can sometimes be very subtle, its important to look for it during your finish prep. Wetting the surface with mineral spirits can sometimes reveal a trouble area. And one way to really amplify problems on the surface is to use a raking light. Any light shining over the surface at a very low angle will achieve the desired effect. The reason why this works is because the low angle of the light creates a very long shadow for anything sitting proud of the surface. This makes it very easy for our eyes to see. A good analogy is to think of what happens in the city when the sun rises and sets. When the sun is at that low angle, the shadows of the buildings are very long. The longer the shadow, the taller the building. So any surface flaws are amplified by this shadow effect. This is very handy before, during, and after finishing and will improve the overall quality of your finish. Pardon the digression, but I love the raking light!

Now if you know your machines are prone to snipe, you can always leave your boards about 4-6" long on both sides. That way you can cut each end off before finish sanding. So those are two potential fixes. Lets talk prevention.

Preventing Snipe

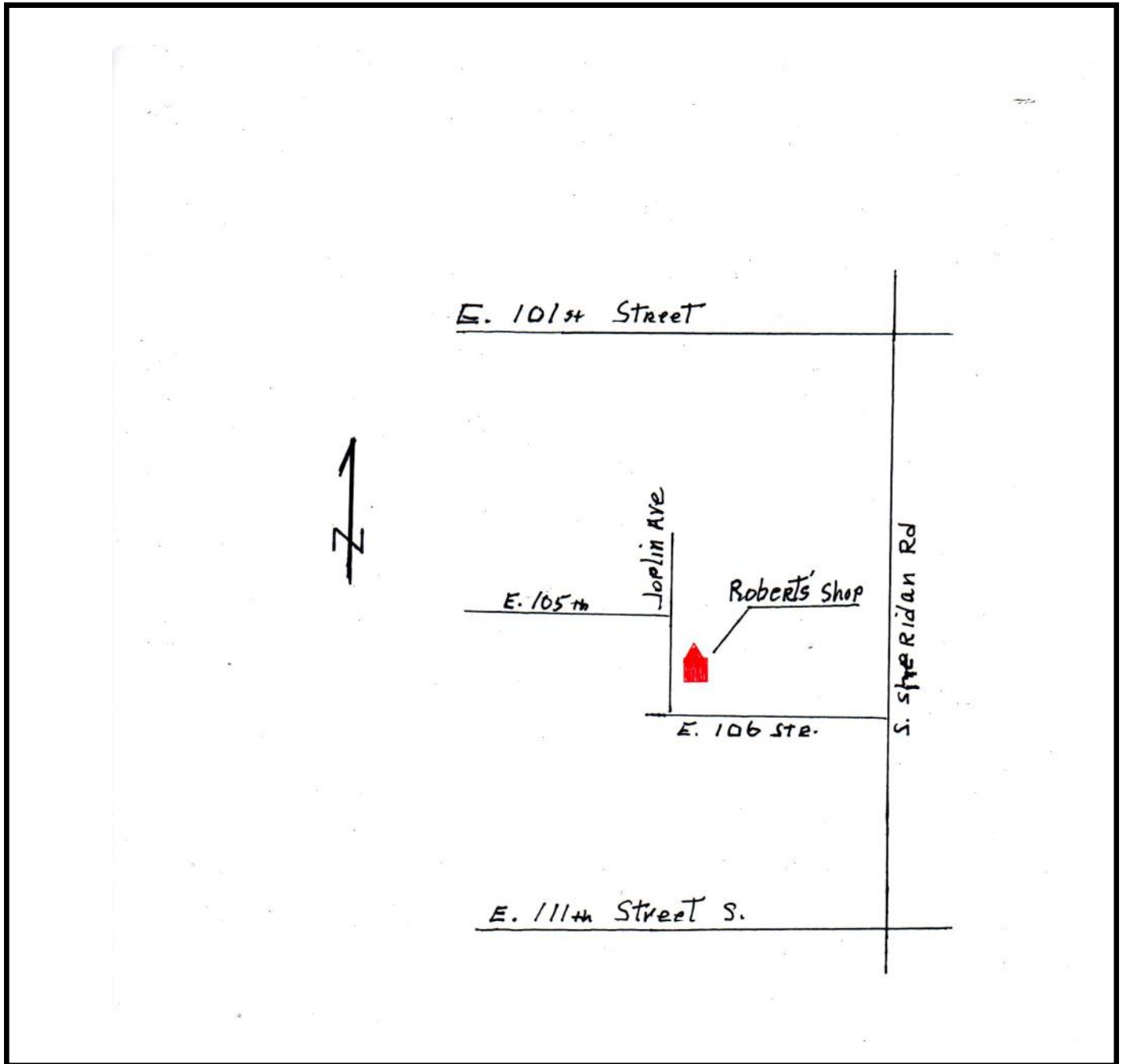
One thing you can do is run scrap pieces in front of and behind your good work piece. These sacrificial pieces seem to help even out the pressure from the rollers, resulting in a clean even cut on your project board. And don't worry too much about the sacrificial pieces. These are going to be very useful later as test pieces for your joinery setups. Its always good to have extra stock around for setups.



In a similar vein, you can use long support rails to prevent snipe. By attaching a couple of strips of wood, about a foot longer than your workpiece (but equally thick), you'll wind up with snipe-free boards all day long.

One final method, which is the least amount of work, is to simply lift on the back end of a board when the front is in contact the cutter/drum head. This helps to keep the front end of the board down on the table and should significantly decrease the amount of snipe. Of course you'll need to lift up on the end on the way out as well.

Directions to Robert Rothenbacher Shop
10509 E. Joplin Ave.
Tulsa, OK 74137
918-852-2872 Cell



The Green Country Woodworkers

The Green Country Woodworkers are made up of men and women who are interested in woodworking as a hobby. The monthly meetings are conducted as educational forums for the benefit of our members and guests. We have idea exchanges, problem solving sessions, safety tips and tool tips plus a main speaker on topics related to woodworking in all its phases. The club sponsors community service projects such as making Toys for Tots at Christmas and supporting Beads of Courage by turning bowls and making boxes for children undergoing cancer treatment at Children Hospital at Saint Francis. The containers hold the children's beads. The beads represent their treatment progress.

Objectives

- To provide the Knothole News, a monthly newsletter.
- To promote woodworking and participate in woodworking and craft shows to inform the public of club activities.
- To make wooden toys. All such toys are donated to selected organizations throughout the year.
- Monthly Show & Tell. All items entered in the show and tell will be presented to the membership by the builder.

Membership applications are available at each meeting from the club secretary or treasurer. At this time, no membership fee is charged.

Knothole News

c/o Earle Smith
7115 E. Jackson Pl.
Broken Arrow, OK 74014

