

Knothole News

www.greencountrywoodworkers.org



PRESIDENT'S MESSAGE

Greetings.



It was so great to see those of you who made the meeting last month. Missed those who couldn't make it and I hope everyone tries really hard to make it this Thursday.

I am recovering really well and have expectation that I will be able to join you at Robert Rothenbacher's for a story of just "plane" resurrection of a poor unwanted tool. Looking forward to it. Stay safe.

Bill Nay, President

"It is good to have an end to journey toward; but it is the journey that matters, in the end."

Ursula K. LeGuin (1929-), novelist, poet, essayist

THIS MONTH'S MEETING

Thursday, June 10, 2021 @ 6:30 PM

Robert Karl Rothenbacher's Shop

(see page 5 for directions and a map)

How to rebuild an old Stanley block plane and
refinish its Japanese paint

Officers

President

Bill Nay 918-492-8481

Vice-President

Gregg Zumwalt 918-605-2761

Secretary

Bill Morgan 918-369-6435

Treasurer

Ray Hucek 918-618-2980

Club Committees

Continuing Board Member

Harold Blalock

Luncheon

Bill Morgan 918-369-6435

Membership Management

Vacant

Name Tags

Ray Hucek 918-618-2980

Newsletter

Mike Ruttgen 701-207-0712

Program Coordinator

Vacant

Toys / Show & Tell

Betty Zumwalt 918-249-4663

Toy Wheels & Axles

Jim Rouse 918-636-9286

Webmaster & Photographer

Arthur Barber 918-671-2437

Minutes from Last Month's Meeting by Bill Morgan

The GCWW club met on 5/13/21 at Earle Smith's home shop. In attendance were Bill Nay, Gregg Zumwalt, Mike Ruttgen, Arthur Barber, Jim Rouse, Venton Knarr, Stan Townsend, Robert Rothenbacher, Ed Sherman, Earle Smith, Harold Blalock and Bill Morgan.

Bill Nay called the meeting to order and led a discussion of a few items of club business. The following schedule for the rest of this year's meeting locations was agreed on:

June - - Robert Rothenbacher's home shop
July - - Bill Morgan's home shop
August - - Bill Nay's shop
September - - Jim Rouse's home shop
October - - Harold Blalock's home shop
November - - Earle Smith's home shop
December - - Christmas dinner - - location TBD

Show and Tell:

Earle Smith showed a walnut table he built for a grandson and a walnut desk he built for a granddaughter. The construction highlighted the the joinery with square pegs and exposed splines.

Harold Blalock built a table with a "glass" (epoxy) finish. He reviewed some of the learning process he went through to master the surface prep, temperature and cleanliness requirements to get the desired outcome

Venton Knarr showed an old curved blade cabinet scraper that he purchased and refurbished. Inspired by the similarity of the blade's shape to that of his coffee cup, Venton turned a drum to match the curvature and then added three strips of progressively finer sandpaper which he then used to sharpen the scraper blade.

Using Venton's experience as a starting point, He and Earle Smith went on to present a more general presentation of the use of cabinet scrapers. The cabinet scraper is essentially just a thick bladed card scraper mounted in a holder with handles similar to those on a spoke shave. The blade has a 45 degree edge and a burr is rolled on the long side of the edge. Earle demonstrated the use of a straight bladed scraper to flatten the surface of a sample of oak. The scraper also works well to remove an old finish or to smooth up a surface prior to finishing. To put the burr on the scraper blade, Earle uses a carbide burnishing rod to first flatten out the 45 degree edge and then with 4 or 5 strokes at about 30 degrees to the edge and another 4 or 5 at a slightly less angle he rolls on the burr. The heavy blade holds the edge for longer than a thinner card scraper and it's also easier to use with no burnt finger tips.

As had been requested, several members brought in a few tools that they no longer used or needed. Bill Nay organized a drawing to establish a picking order and everyone got to pick an item that they can use (or contribute to the next tool swap). The selection ranged from cabinets with a selection of screws to molding sets and dado cutters.

In addition to the swap, Earle offered a Freud dado set and a Porter Cable biscuit joiner for sale. Earle's items sold quickly and most of the tool swap items found new homes.

Our first meeting in 15 months offered a welcome opportunity to reconnect and to share both some woodworking and personal experiences over coffee and refreshments.

Photo's From Last Month's Meeting



Hosts for Upcoming Meetings

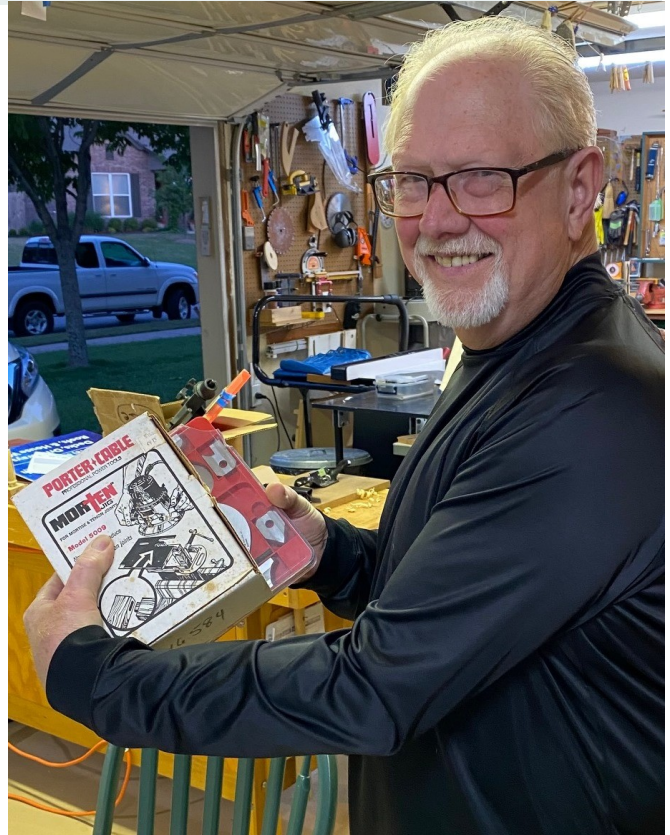
June	Robert Rothenbucher
July	Bill Morgan
August	Bill Nay
September	Jim Rouse
October	Harold Blalock
November	Earle Smith
December	Christmas Party



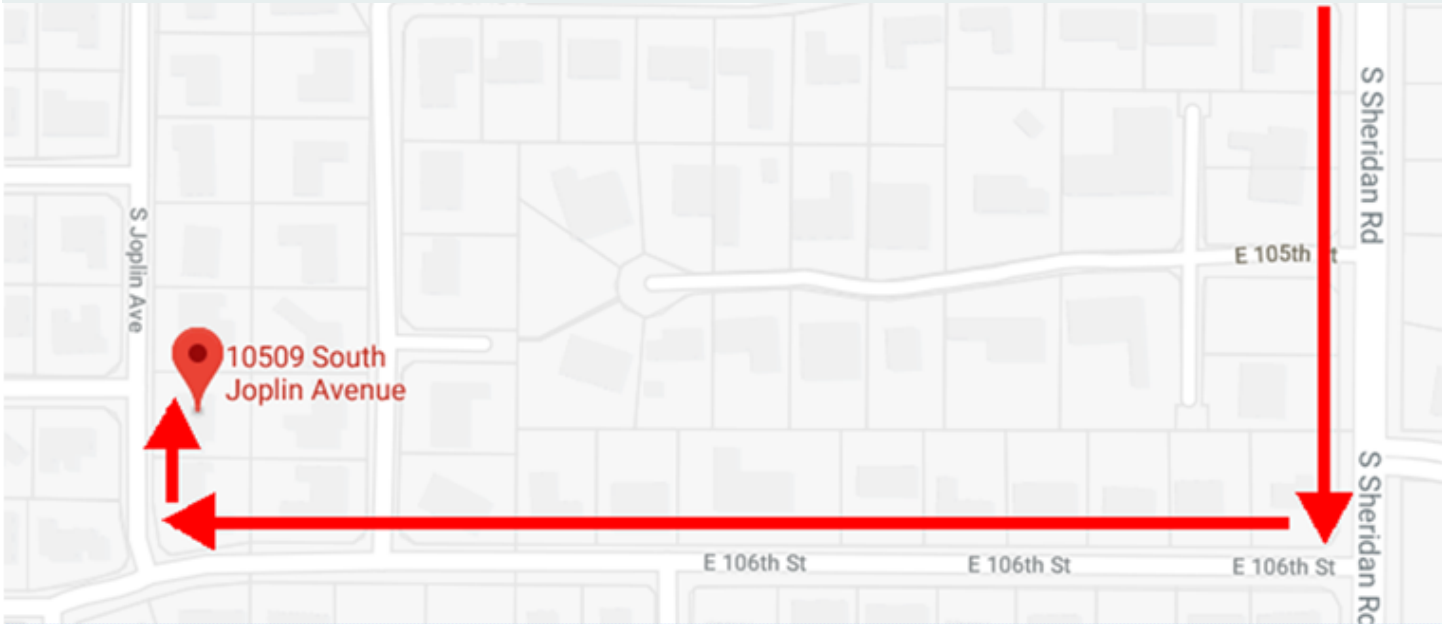
Photo's From Last Month's Meeting (Continued)



Photo's From Last Month's Meeting (Continued)



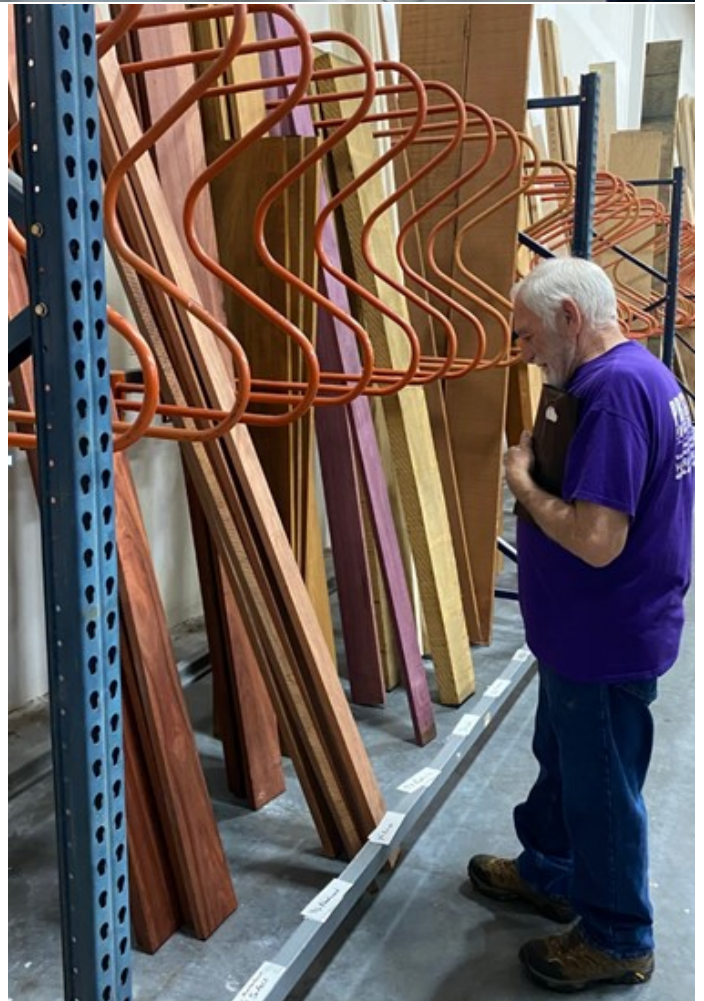
Robert Karl Rothenbucher's Shop, 10509 S Joplin Ave
Tulsa, Oklahoma, 918-701-7044, Home



Photo's From Tour at Dakota Hardwoods



Photo's From Tour at Dakota Hardwoods (Continued)



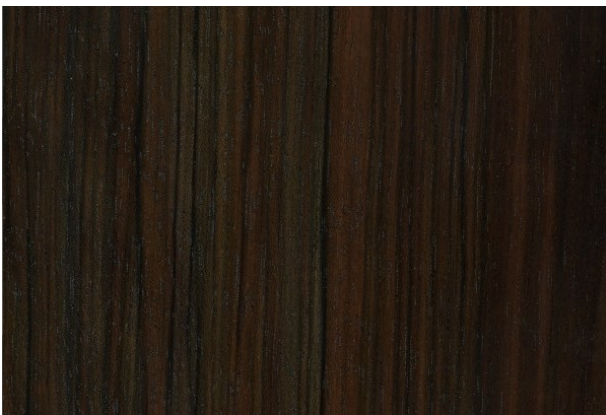
Photo's From Tour at Dakota Hardwoods (Continued)



“Ebony, Macassar” from (www.wood-database.com)



Sanded



Sealed

Common Name(s): Macassar Ebony, Striped Ebony, Amara Ebony

Scientific Name: *Diospyros celebica*

Distribution: Southeast Asia

Tree Size: 50-65 ft tall, 1.5 ft trunk diameter

Average Dried Weight: 70 lbs/ft³

Specific Gravity (Basic, 12% MC): .89, 1.12

Janka Hardness: 3,220 lbf (14,140 N)

Modulus of Rupture: 22,790 lbf/in² (157.2 MPa)

Elastic Modulus: 2,515,000 lbf/in² (17.35 GPa)

Crushing Strength: 11,630 lbf/in² (80.2 MPa)

Color/Appearance: Heartwood has dramatic striped appearance, somewhat similar to Zebrawood. Yellow to reddish brown body with darker brown or black stripes. Sharply demarcated sapwood is pale gold color.

Grain/Texture: Grain is usually straight, but can sometimes be interlocked; fine uniform texture and good natural luster.

Endgrain: Diffuse-porous; medium to large pores in no specific arrangement; solitary, with radial multiples of 2-4 common; mineral deposits present; growth rings indistinct; rays not visible without lens; parenchyma reticulate, vasicentric.

Rot Resistance: Heartwood is rated as very durable; poor insect/borer resistance.

Workability: Tends to be rather difficult to work, due to its high density, blunting effect on cutters, and its occasionally interlocked grain. The wood is also prone to checking and splitting during drying, and drying defects are not uncommon. The wood is excellent for turned objects.

Odor: Macassar Ebony has a mild, slightly unpleasant odor when being worked.

Allergies/Toxicity: Although severe reactions are quite uncommon, Ebony in the *Diospyros* genus has been reported as a sensitizer, and Macassar Ebony has been specifically reported to cause skin irritation.

Pricing/Availability: Likely to be extremely expensive, along with most other Ebony members in the *Diospyros* genus. The tree grows slowly, has a very limited natural habitat, and is highly desired for the wood's aesthetic appeal and toughness.

Sustainability: This wood species is not listed in the CITES Appendices, but is on the IUCN Red List. It is listed as vulnerable due to a population reduction of over 20% in the past three generations, caused by a decline in its natural range, and exploitation.

Common Uses: Veneer, high-end cabinetry, billiard cues, musical instruments, and other small specialty items.

Comments: So named for the Indonesian port-city of Makassar, which is one of the primary points of exportation.

GREEN COUNTRY WOOD- WORKERS

The Green Country Woodworkers are made up of men and women who are interested in woodworking as a hobby.

.....

The monthly meetings are conducted as educational forums for the benefit of our members and guests. We have idea exchanges, problem solving sessions, safety tips and tool tips plus a main speaker on topics related to woodworking in all its phases.

.....

The club sponsors community service projects such as making Toys for Tots at Christmas and supporting Beads of Courage by turning bowls and making boxes for children undergoing cancer treatment at Children Hospital at Saint Francis. The containers hold the children's beads. The beads represent their treatment progress.

OBJECTIVES

- To provide the Knothole News, a monthly newsletter
- To promote woodworking and participate in woodworking and craft shows to inform the public of club activities
- To make wooden toys which are donated to selected organizations throughout the year
- Monthly Show & Tell; all items entered in the show and tell will be presented to the membership by the builder

Membership applications are available at each meeting from the club secretary or treasurer. At this time, no membership fee is charged.

MEETINGS

The club meets on the second Thursday of each month at 6:30PM, typically at a designated member's shop. The upcoming location and topic are published in advance in the Knothole News.

We also have a monthly dinner/social on the 4th Thursday of the month at 6:00PM; the location is determined during the regular monthly meeting.

WWW.GREENCOUNTRYWOODWORKERS.ORG

Please be sure to check out our new web site for more information about the organization, past Knothole News publications, pictures, resources, etc.



KNOTHOLE NEWS

c/o Mike Ruttgen
rruttgen@att.net
(701) 207-0712, mobile